



# PRODUCT CATALOG

GL GMBH



# **PRODUCT CATALOG**

GL GmbH

# ABOUT US

## MORE EFFICIENCY IN YOUR WORKSHOPS

In Frickenhausen, we combine precision, creativity, and experience: From engineering and prototyping to sheet metal production, our teams develop customized solutions every day. With our expertise in laser cutting, edging, and welding, we not only create products for our own equipment and tool manufacturing, but also efficiently apply these skills to your contract projects. We place particular emphasis on quality, safety, and user-friendliness.

A collaborative relationship with customers, suppliers, and employees forms the basis for long-term, successful business relationships and sustainable growth. This ensures our solutions remain customized, reliable, and future-oriented.





## **INNOVATIVE SOLUTIONS IN EXCELLENT QUALITY**

100% Made in Germany:  
flexible, fast, certified according  
to DIN EN ISO 9001:2015. With  
components from reliable German  
and European partnerships.

## **TRADITION MEETS INNOVATION**

What began in the early 1990s with the manufacture of sheet metal parts developed into a success story: with the introduction of brake maintenance equipment in 2000, the workshop technology division was created. Today, Thomas and Holger Henzler, the second generation of the family, combine family values with technological progress and are successfully leading GL TECHNICS into the future.

**HIGH QUALITY**  
**MADE IN GERMANY**

# CONTENT

## APPLICATIONS FOR ADBLUE®



PAGE 08

## BRAKE MAINTENANCE



PAGE 14

## LIFTING GEAR



PAGE 50

## TOOLS



PAGE 58

## **FUEL APPLICATIONS**



**PAGE 26**

## **MINERAL OIL FILLING**



**PAGE 34**

## **GEARBOX FLUSHING**



**PAGE 60**

## **SUSPENSION**



**PAGE 70**

# APPLICATIONS FOR ADBLUE®

## NEW STANDARDS FOR DRIP-FREE, ODOR-FREE AND SAFE FILLING

The EURO-6-Norm means that nearly all diesel cars have an additional tank with AdBlue® which must be topped up regularly. It is very important when filling with the AdBlue® liquid that the filling process is carried out absolutely drip free, as this is a liquid that crystallizes quickly in air, developing foul smells.

It must also be ensured that the tank is full but not overfull. Filling beyond the limit can lead to the tanks bursting at temperatures below minus 11° C. A fault notification is also stored in the vehicle's log. Clearing this can be expensive as it requires extraction of the AdBlue®-liquid.



**210L PROFI LINE  
PLUS FILLING DEVICE  
FOR ADBLUE® WITH  
ROLLER CONVEYO**  
PAGE 10



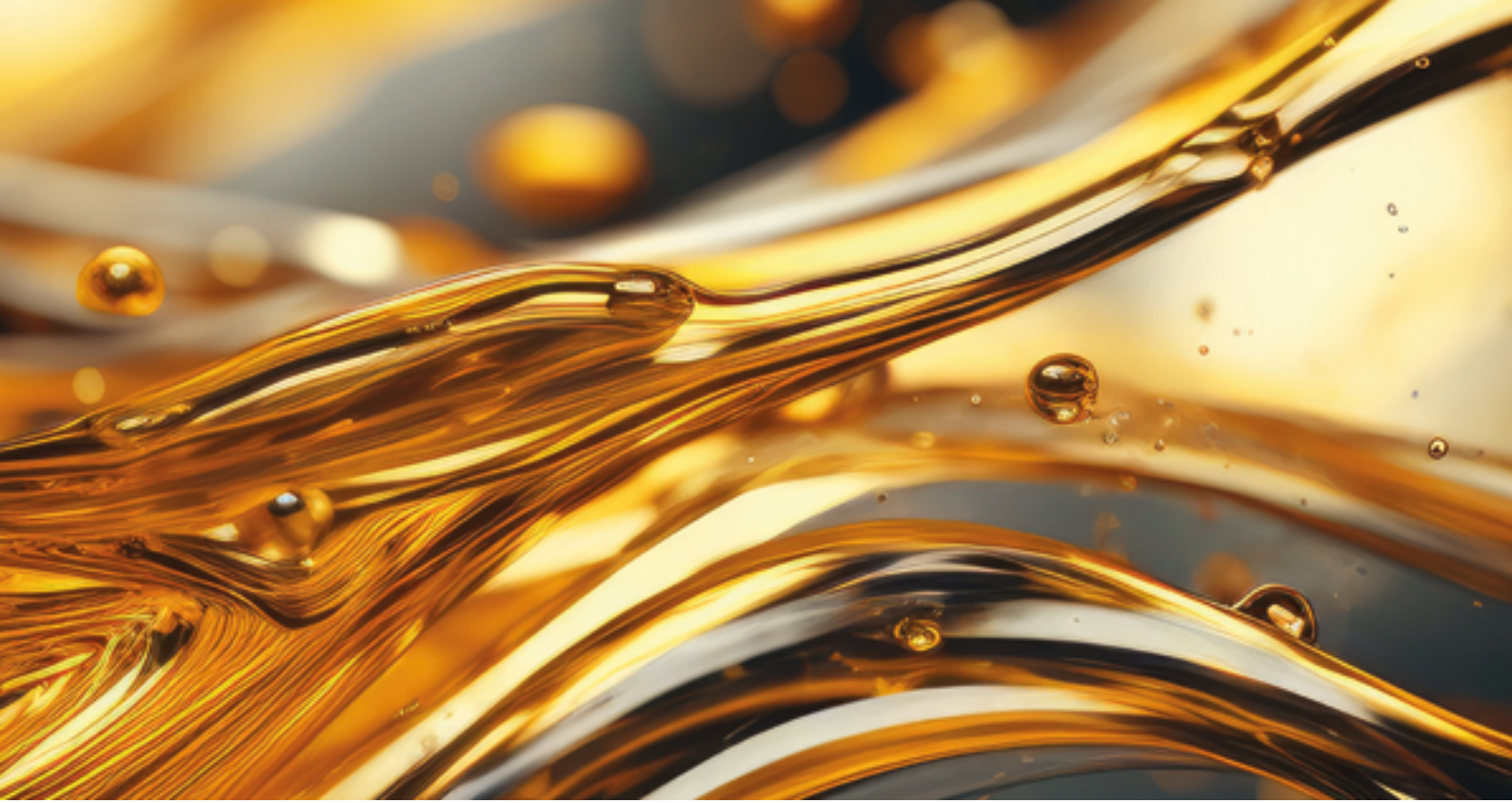
**EXTRACTION  
PUMP FOR  
ADBLUE® 230V**  
PAGE 11



**EXTRACTION FITTING  
210L IN 60L  
APPLIANCE TANK**  
PAGE 12



**EXTRACTION FITTING  
1,000L IN 60/210L  
APPLIANCE TANK**  
PAGE 13



## **GL TECHNICS PATENT: THE FIXED SCREWED-IN FILLING CONNECTOR**

The firmly screwed-in filling connector with integrated sensor ensures safe adaptation and automatic switch-off of the Profi-Line-Plus appliances even on hard-to-access connections. The filling connection is also equipped with a ratchet disc to prevent over-tightening. The quantity of fluid transferred can reliably read off in appliances with counters.

A sealed hose system without a nozzle allows drip-free disconnection from the vehicle. This avoids unpleasant odors and AdBlue® can be added cleanly and safely.

# 210L PROFI LINE PLUS FILLING DEVICE FOR ADBLUE® WITH ROLLER CONVEYO

ARTICLE NO. 803.210.000



The filling device for AdBlue® 210 LITER PROFI LINE PLUS is the optimal partner for high AdBlue® throughput. The top models of the PROFI LINE PLUS series are equipped with the proven GL TECHNICS filling connection, with which the filling hose of the units can be firmly connected to the vehicle tank. Thanks to sophisticated sensor technology, the unit can be operated in automatic mode. This enables the tank to be filled in a minimum of time. As soon as the filling process is completed, the downstream suction system guarantees a maximum permissible tank level. Thus the PROFI LINE PLUS units achieve a fast and above all drip-free filling of the vehicle tank.

Furthermore, the advanced microprocessor control system makes it possible to select pre-set filling quantities. The internal memory is used for digital order documentation and can be read out via USB interface.

**SUITABLE  
FOR LARGE  
CONTAINERS.**



TECHNICAL DATA	210L PROFI LINE PLUS FILLING DEVICE FOR ADBLUE® WITH ROLLER CONVEYO
Article no.	803.210.000
Dimensions	980 x 780 x 1.130 mm
Weight	72 kg
Container size	210 l
Transfer capacity	7,6 l/min or 3,8 l/min
Mains voltage	230 V
Automatic shutdown	Yes
EAN no.	4251705200448

## DELIVERY INCLUDES

- Movable filling device for 210 liter containers
- Restraint belt and extraction tube for 210 liter containers



# EXTRACTION PUMP FOR ADBLUE® 230V

ARTICLE NO. 400.301.000



Surplus liquid can be removed from the car's AdBlue® supply tank using the extraction pump. This is necessary for many repairs to the vehicle's AdBlue® system. All components of the pump are 100% resistant to AdBlue®.

The strong housing is made of stainless steel. The pressure and extraction hoses are manufactured from silicon and fitted with a stainless-steel cone tip at the end.

TECHNICAL DATA	EXTRACTION PUMP FOR ADBLUE® 230V
Article no.	400.301.000
Transfer capacity	1,3 l/min
Mains voltage	230 V
Length of extraction hose	2.100 mm
Pressure hose length	1.200 mm
EAN no.	4251705200479



**REMOVE  
SURPLUS  
LIQUID WITH  
NO RESIDUE.**

## DELIVERY INCLUDES

- Complete pump unit with pressure and extraction hoses in plastic case



**EXTRACTION**  
**FITTING 210L IN 60L**  
**APPLIANCE TANK**

**ARTICLE NO. 803.320.000**



As accessory to the 60 liter appliance, enables decanting from 210 liter to 60 liter containers.

210 liter container not included.

TECHNICAL DATA	EXTRACTION FITTING 210L IN 60L APPLIANCE TANK
Article no.	803.320.000
EAN no.	4251705201551

**EXTRACTION**  
**FITTING 1,000L**  
**IN 60/210L**  
**APPLIANCE TANK.**



**DELIVERY INCLUDES**

- Extraction fitting 210 liter in 60 liter Appliance tank

# EXTRACTION FITTING

## 1,000L IN 60/210L

### APPLIANCE TANK

ARTICLE NO. 803.310.000



As accessory, the extraction fitting enables decanting from IBC into the supply tank of the 60 liter or 210 liter appliance.

TECHNICAL DATA	EXTRACTION FITTING 1,000L IN 60/210L APPLIANCE TANK
Article no.	803.310.000
EAN no.	4251705202305



**EXTRACTION  
FITTING 210L IN  
60L APPLIANCE  
TANK.**

#### DELIVERY INCLUDES

- Extraction fitting 1,000 liter in 60/210 liter Appliance Tank



# BRAKE

# MAINTENANCE

## THE PERFECTA SERIES

The well-thought out, tried and tested series of GL TECHNICS devices covers all areas of application in the brake maintenance sector. From small mobile devices to the drivable 60-liter device for processing large volumes, all workshop requirements are met. The consumer-orientated product development allows oneman operation in brake maintenance.



**PERFECTA 3**

PAGE 16



**PERFECTA 4  
DESIGN**

PAGE 17



**PERFECTA 4  
DESIGN PLUS**

PAGE 18



**PERFECTA 20  
DESIGN PLUS**

PAGE 19



**PERFECTA 60  
DESIGN PLUS**

PAGE 20



**1-LITER COLLEC-  
TION BOTTLE  
ROUND NECK WITH  
HANDLE AND TUBE**

PAGE 21



**2-LITER COLLEC-  
TION BOTTLE  
ROUND NECK WITH  
HANDLE AND TUBE**

PAGE 22



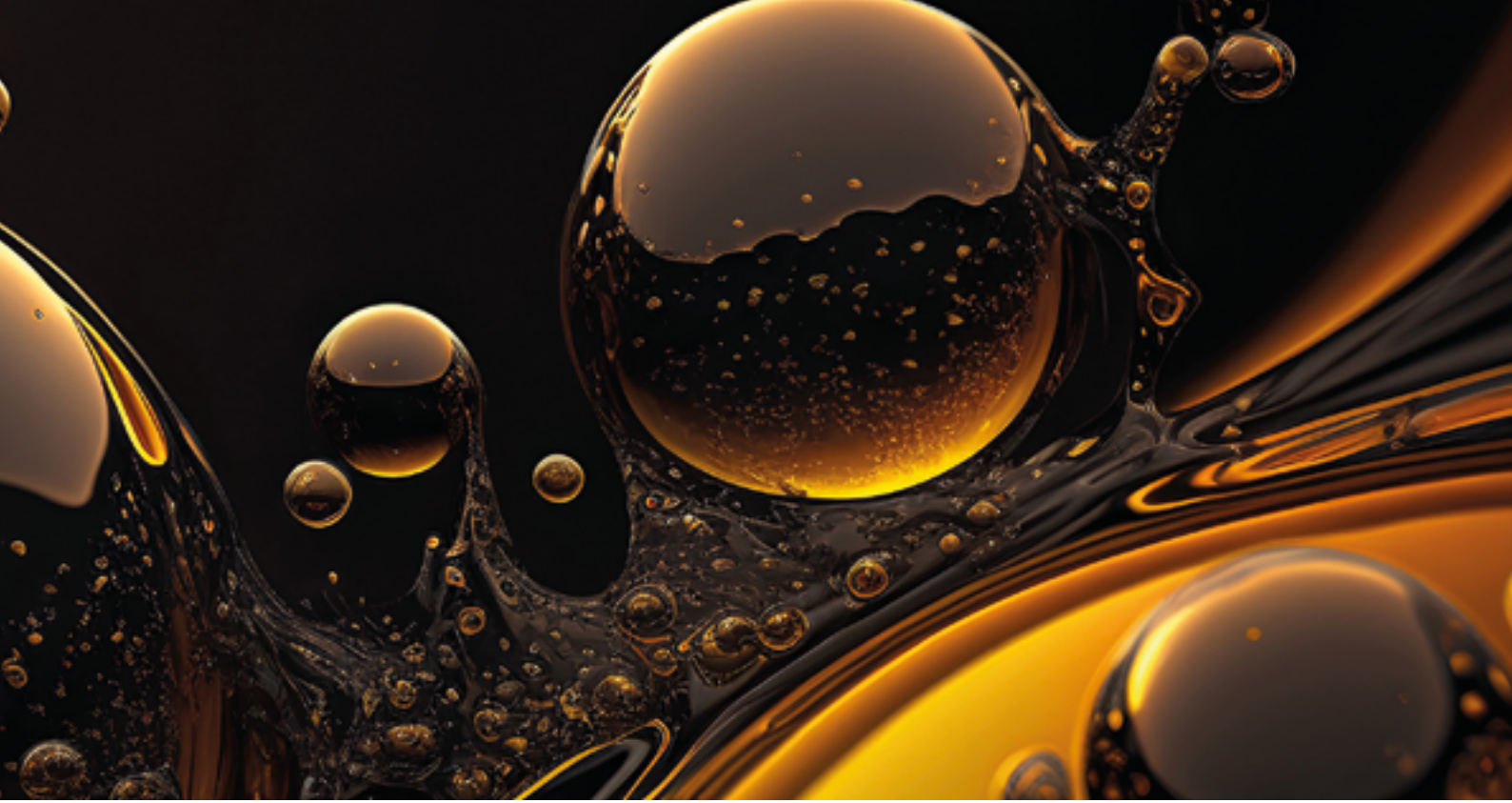
**UNIVERSAL  
ADAPTER CASE  
PROFI SMALL**

PAGE 23



**UNIVERSAL  
ADAPTER CASE  
PROFI LARGE**

PAGE 24



## THE INNOVATIVE PERFECTA PLUS EXTRACTION SYSTEM

The PERFECTA PLUS extraction system integrated into the device empties the compensation tank before filling with new brake fluid. This working practice has long been prescribed by leading automobile manufacturers. The reason: even slight deposits of dirt and the smallest solid particles can cause damage to the system or to the brake cylinders at the wheels. Another advantage of the extraction system is that it saves about 0.5 liter of brake fluid, as the old brake fluid does not need to be forced through the system. This speeds up the work and the correct filling level can be set after the filling process.

DEVICE	CONTAINER SIZE	PRESSURE REGULATOR	MOBILITY	EXTRACTION PLUS
PERFECTA 3	5 Liter	Fixed at 2 bar	Portable	No
PERFECTA 4 DESIGN	5 Liter	Continuous	Portable	No
PERFECTA 4 DESIGN PLUS	5 Liter	Continuous	Portable	Yes
PERFECTA 20 DESIGN PLUS	20 Liter	Continuous	Movable	Yes
PERFECTA 60 DESIGN PLUS	60 Liter	Continuous	Movable	Yes



## PERFECTA 3

ARTICLE NO. 900.003.000

The PERFECTA 3 model is ideally suited to mobile use in brake maintenance. It has all the basic characteristics of the PERFECTA series.

The working pressure is fixed at 2 bar. A rubber cone set is included.

**PERFECT FOR  
MOBILE USE.**



TECHNICAL DATA	PERFECTA 3
Article no.	900.003.000
Dimensions	300 x 200 x 300 mm
Weight	6 kg
Max. container size	5 l
Mains voltage	230 V/50 Hz
Filling hose length	3,5 m
Working pressure	2 bar
Pressure regulator	None, fixed at 2 bar
Mobility	Portable
Extraction Plus	No
EAN no.	4251705200332

### DELIVERY INCLUDES

- Device with adapter E 20 (Euroadapter)
- Set of rubber cones

# PERFECTA 4 DESIGN

ARTICLE NO. 903.004.000



The PERFECTA 4 DESIGN devices have proven themselves over years of use in the workshop. They are ideally suited to mobile use due to their low weight. They have a continuously adjustable pressure regulator and a universal rubber cone with integrated sieve. The device is also available in 110 V-design. If this is not enough, the product variant PERFECTA 4 DESIGN PLUS offers an extended performance with similar device dimensions.

TECHNICAL DATA	PERFECTA 4 DESIGN
Article no.	903.004.000
Dimensions	290 x 310 x 400 mm
Weight	7 kg
Max. container size	5 l
Mains voltage	230 V/50 Hz
Filling hose length	3,5 m
Working pressure	0,4 bar to 3,5 bar
Mobility	Portable
Extraction Plus	No
EAN no.	4251705200295



**SOLID BASIC  
DEVICE FOR  
BRAKE  
MAINTENANCE.**

## DELIVERY INCLUDES

- Device with adapter E 20 (Euroadapter)

Container not included in delivery.



# PERFECTA 4 DESIGN PLUS

ARTICLE NO. 903.904.000



**"PORTABLE"  
DEVICES  
OF THE  
PERFECTA  
SERIES.**



The PERFECTA 4 DESIGN PLUS devices have proved themselves over years of use in the workshop. They are ideally suited to mobile use due to their low weight. They have a continuously adjustable pressure regulator and a universal rubber cone with integrated sieve.

The DESIGN PLUS version is the most advanced version of the portable brake maintenance devices from GL TECHNICS. Together with the PERFECTA 4 and PERFECTA 4 DESIGN versions, it offers the perfect introduction to professional brake maintenance.

TECHNICAL DATA	PERFECTA 4 DESIGN PLUS
Article no.	903.904.000
Dimensions	250 x 390 x 410 mm
Weight	9 kg
Max. container size	5 l
Mains voltage	230 V/50 Hz
Filling hose length	3,5 m
Working pressure	0,4 to 3,5 bar
Pressure regulator	Continuous
Mobility	Portable
Extraction Plus	Yes
EAN no.	4251705200370

## DELIVERY INCLUDES

- Device with Adapter E 20 (Euroadapter)
- 1 liter collection bottle

Container not included in delivery

# PERFECTA 20 DESIGN PLUS

ARTICLE NO. 901.920.000



The PERFECTA 20 DESIGN PLUS brake maintenance device takes the brake fluid directly from the 20 liter original container. There is no decanting of the fluid.

The movable device can be operated without any difficulty by one man. It is equipped with a continuously adjustable pressure regulator and a universal rubber cone with integrated sieve. It also has the integrated PERFECTA PLUS pre-extraction.

TECHNICAL DATA	PERFECTA 20 DESIGN PLUS
Article no.	901.920.000
Dimensions	440 x 540 x 1.000 mm
Weight	30 kg
Max. container size	20 l
Mains voltage	230 V/50 Hz
Filling hose length	3,5 m
Working pressure	0,4 bar to 3,5 bar
Pressure regulator	Continuous
Mobility	Movable
Extraction Plus	Yes
EAN no.	4251705200165

## DELIVERY INCLUDES

- Device with Adapter E 20 (Euroadapter)
- 1 liter collection bottle

Container not included in delivery

**THE RELIABLE  
ALL-ROUNDER  
IN EVERYDAY  
USE IN THE  
WORKSHOP**



# PERFECTA 60 DESIGN PLUS

ARTICLE NO. 901.960.000



The PERFECTA 60 DESIGN PLUS is designed for especially big volumes: the brake fluid is taken directly from the 60 liter original container. The device can therefore also be used with commercial vehicles.

The continuously adjustable pressure regulator and an extraction tube with a sieve are also part of the equipment, together with the integrated PERFECTA PLUS pre-extraction.

**OUR BIG ONE  
IN BRAKE  
MAINTENANCE.**



TECHNICAL DATA	PERFECTA 60 DESIGN PLUS
Article no.	901.960.000
Dimensions	491 x 610 x 1.060 mm
Weight	45 kg
Max. container size	60 l
Mains voltage	230 V/50 Hz
Filling hose length	3,5 m
Working pressure	0,4 to 3,5 bar
Pressure regulator	Continuous
Mobility	Movable
Extraction Plus	Yes
EAN no.	4251705200066

## DELIVERY INCLUDES

- Device with standard extractor pipe
- Adapter E 20 (Euroadapter)
- Two 2 liter collection bottles

# 1-LITER COLLECTION BOTTLE ROUND NECK WITH HANDLE AND TUBE

**ARTICLE NO. 800.810.000**

TECHNICAL DATA	1-LITER COLLECTION BOTTLE ROUND NECK WITH HANDLE AND TUBE
Article no.	800.810.000
EAN no.	4251705200554



**PICTURE  
SHOWS 1-LITER  
COLLECTION  
BOTTLE.**

## DELIVERY INCLUDES

- 1 liter collection bottle



# **2-LITER COLLECTION BOTTLE ROUND NECK WITH HANDLE AND TUBE**

**ARTICLE NO. 800.820.000**



**COMPATIBLE  
WITH ATE  
SYSTEM.**



## **TECHNICAL DATA**

Article no.

EAN no.

## **2-LITER COLLECTION BOTTLE ROUND NECK WITH HANDLE AND TUBE**

800.820.000

4251705200851

## **DELIVERY INCLUDES**

- 2 liter collection bottle

# UNIVERSAL ADAPTER CASE PROFI SMALL

ARTICLE NO. 800.010.000



This adapter set consists of the four most common adapters. It is compatible with many European and Asian vehicle manufacturers and therefore almost indispensable for the independent workshop.

TECHNICAL DATA	UNIVERSAL ADAPTER CASE PROFI SMALL
Article no.	800.010.000
EAN no.	4251705200424



**PROFESSIONAL  
ADAPTER CASE  
SMALL.**

## DELIVERY INCLUDES

- Universal adapter U 90 K
- Adapter HST 007
- Adapter E 20 W
- Adapter BS 37



# UNIVERSAL ADAPTER CASE PROFI LARGE

ARTICLE NO. 800.011.000



This high-quality adapter set consists of six adapters. It is compatible with almost all European and Asian vehicles and therefore indispensable for larger and brand-open independent workshops. The adapters are made of anodised aluminium.

## TECHNICAL DATA

## UNIVERSAL ADAPTER CASE PROFI LARGE

Article no.

800.011.000

EAN no.

4251705201520

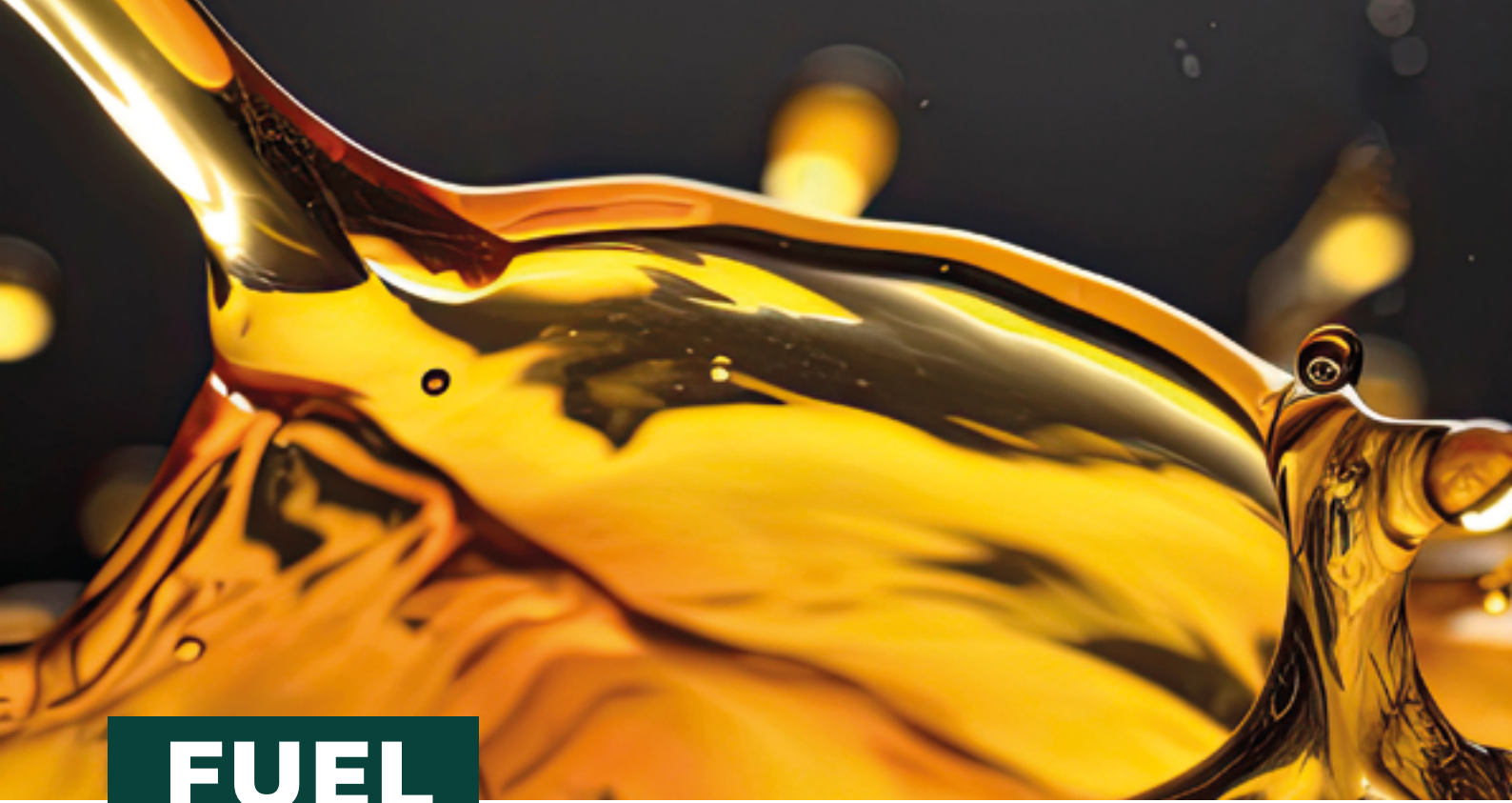
## PROFESSIONAL ADAPTER CASE LARGE.



## DELIVERY INCLUDES

- Universal adapter U 90 K
- Adapter HST 007
- Adapter E 20 W
- Adapter BS 37
- Adapter 3 O 42
- Adapter BS 36 W





# FUEL

# APPLICATIONS

## INNOVATIVE SOLUTIONS FOR HANDLING FUELS

After changing the diesel filter, it is necessary to purge the fuel supply line. This procedure is taken over by the DEG Diesel Venting Device quickly and safely in HDEP/ MDEG diesel motors.



**TANK  
PRIMUS 80**

PAGE 28



**EXTRACTION  
PROBE SET**

PAGE 29



**AUTOMATIC  
NOZZLE  
(TANK PRIMUS 80)**

PAGE 30



**AUTOMATIC  
NOZZLE  
(TANK PRIMUS  
100/100S)**

PAGE 31



**DEG DIESEL  
VENTING  
DEVICE**

PAGE 32

**"LONG"  
ELECTRICAL  
CONNECTION  
CABLE  
PAGE 33**



## TANK

## PRIMUS 80

ARTICLE NO. 400.080.000



The movable TANK PRIMUS 80 is equipped with a fixed built-in 88 liter tank. Switching from extraction to refilling is done simply by changing the hose connectors. A protected visual fill level display shows the fuel level in the device's tank.

The TANK PRIMUS 80 has various safety measures. An earth terminal and conducting rollers provide equalization of potential. The steering rollers are fitted with a brake to prevent the appliance from moving.

**SAFE  
EXTRACTION  
IN THE  
WORKSHOP.**



TECHNICAL DATA	TANK PRIMUS 80
Article no.	400.080.000
Max. air consumption	200 nl/min
Tank content	88 l
Transfer capacity	10 l/min
Dimensions	450 x 550 x 1,100 mm
Weight	35 kg
Fill-level display	Optical
Mobility	Movable
Extract / refill shifts	Change hoses
Tank exchange	Fixed tank
EAN no.	4251705200387

## DELIVERY INCLUDES

- Pump unit with 88 liter tank
- Hose package for extraction or refilling

# EXTRACTION PROBE SET

**ARTICLE NO. 400.121.000**

This set allows extraction from vehicles with tanks that are difficult to access via the tank supports and the fuel line. The set also includes a stainless steel-tube for unlocking the mis-fuel protection.

TECHNICAL DATA	EXTRACTION PROBE SET
Article no.	400.121.000
EAN no.	4251705201414



**EXTRACTION  
PROBE SET  
FOR THE  
TANK PRIMUS  
SERIES.**

## DELIVERY INCLUDES

- 1 x Extraction Probe Set



# AUTOMATIC NOZZLE (TANK PRIMUS 80)

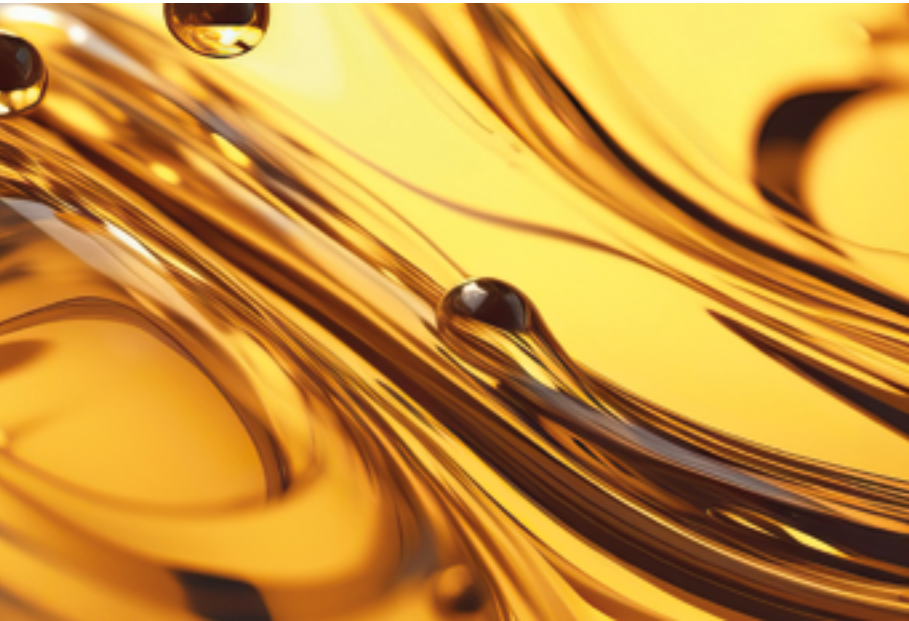
ARTICLE NO. 400.111.000



If there is more fuel in the device tank than the vehicle tank can receive, this prevents overfilling when refueling the vehicle.

TECHNICAL DATA	AUTOMATIC NOZZLE (TANK PRIMUS 80)
Article no.	400.111.000
EAN no.	4251705202015

**CLEAN,  
FAST,  
COMFORT-  
ABLE.**



# **AUTOMATIC NOZZLE (TANK PRIMUS 100/100S)**

**ARTICLE NO. 400.109.000**

The Primus 100/100S automatic fuel pump stops refueling when the fuel level is reached. This model is therefore particularly suitable for large quantities of fuel.

TECHNICAL DATA	AUTOMATIC NOZZLE (TANK PRIMUS 100/100S)
Article no.	400.109.000
EAN no.	4251705201872



**REFUEL  
EFFICIENTLY.**





# DEG DIESEL VENTING DEVICE

ARTICLE NO. 400.201.000

When exchanging the diesel filter or the fuel high pressure pump, air remains in the lines after the fuel is drained. Before the engine can be restarted, the diesel lines must therefore be purged.

Electric DEG Diesel venting device quickly and safely purges HDEP/MDEG diesel engines, transporting diesel fuel via a powerful pump into the lines so that air bubbles trapped in the system are completely cleared from the fuel circuit.

**PORTABLE  
AND  
POWERFUL.**



TECHNICAL DATA	DEG DIESEL-VENTING DEVICE
Article no.	400.201.000
Dimensions	260 x 320 x 380 mm
Weight	13,8 kg
Working pressure	6,5 bar
Length of extraction hose	2 m
Filling hose length	3 m
Power supply	24 V
Electrical connection cable with battery terminals and fuse	3 m
EAN no.	4251705200127

## DELIVERY INCLUDES

- Device with adapter E 20 (Euroadapter)

# "LONG" ELECTRICAL CONNECTION CABLE

**ARTICLE NO. 400.201.100**

Long electrical connection cable with battery terminals and fuse, 15 m. The sealing technology is designed for diesel EN 590 and B7.

TECHNICAL DATA	"LONG" ELECTRICAL CONNECTION CABLE
Article no.	400.201.100
EAN no.	4251705201711

**ACCESORIES  
OMNIBUS.****DELIVERY INCLUDES**

- With battery terminals and fuse





# MINERAL OIL FILLING

## **PROFESSIONAL SOLUTIONS FOR FAST AND SAFE HYDRAULIC OIL CHANGES IN SHIFT AND CLUTCH SYSTEMS.**

Powerful and flexible: the high conveyance capacity guarantees correct hydraulic oil changes in shift and clutch systems in HGVs. Regular changes of hydraulic fluid are necessary in servicing shift and clutch systems. In the PERFECTA-HY series, GL TECHNICS has developed appliances which prevent air remaining in the system due to their high rate of transfer. With the movable, portable or mobile construction, there is a suitable device available for all uses.

### **OTHER FEATURES OF THE PERFECTA-HY DEVICES:**

- Throughflow > 45 l/h
- Automatic switch-off if the container is empty
- Pressure-free disconnection from the vehicle
- No need to purge the device off air when changing container
- Easy handling, even in one-man operation



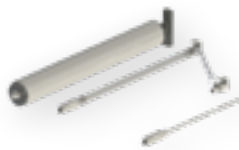
**PERFECTA 20 HY**

PAGE 36



**PERFECTA 20  
HY MOBIL**

PAGE 37



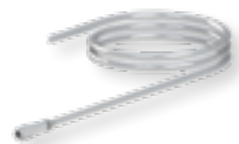
**HY - ADAPTER  
A, B, C FOR  
DAIMLER TRUCK**

PAGE 38



**HY - ADAPTER D  
FOR DAIMLER  
TRUCK**

PAGE 39



**HY - ADAPTER E  
FOR DAIMLER  
TRUCK**

PAGE 40



**HY - ADAPTER F  
FOR DAIMLER  
TRUCK**

PAGE 41



**HY - ADAPTER G  
FOR DAIMLER  
TRUCK**

PAGE 42



**HY - ADAPTER H  
FOR DAIMLER  
TRUCK**

PAGE 43



**HY - ADAPTER I  
FOR DAIMLER  
TRUCK**

PAGE 44



**HY - ADAPTER K  
FOR DAIMLER  
TRUCK**

PAGE 45



**HY - ADAPTER L  
FOR DAIMLER  
TRUCK**

PAGE 46



**HY - ADAPTER  
MAN-TGA FOR  
VEHICLES WITH  
KONSBERG SHIFT**

PAGE 47



**HY - ADAPTER  
MANTGL G 45**

PAGE 48

DEVICE	USE CASE	PUMP	VEHICLES	MOBILITY
<b>PERFECTA 20 HY</b>	Hydraulic shifts and clutches	Electric	ACTROS with HPS 2, ATEGO, AXOR, MAN-TGA / TGL Agricultural and construction machines	Movable
<b>PERFECTA 20 HY MOBIL</b>	Hydraulic shifts and clutches	Electric	ACTROS with HPS 2, ATEGO, AXOR, MAN-TGA / TGL Agricultural and construction machines	In box for use in mobile service



# PERFECTA 20 HY

ARTICLE NO. 900.520.000

The movable device in the PERFECTA-HY series is designed for use in hydraulic shifts and clutches. Decanting is unnecessary, as the hydraulic oil can be taken directly from all common containers for hydraulic oil including the 20 liter Daimler Truck original container (A 001989 2403 12). The PERFECTA 20 HY is suitable for ACTROS with HPS 2, ACTROS 963 and 964, ATEGO, AXOR and MAN-TGA /TGL. It has an electric pump and a continuously adjustable pressure regulator.

**SOLID  
SOLUTION  
ON TWO  
WHEELS.**



TECHNICAL DATA	PERFECTA 20 HY
Article no.	900.520.000
Dimensions	400 x 500 x 960 mm
Weight	26 kg
Max. container size	20 l
Working pressure	0,5 to 3,8 bar
Mains voltage	230 V/50 Hz
Filling hose length	3,9 m
Mobility	Movable
Use case	Hydraulic shifts and clutches
Pump	Electric
Vehicles	ACTROS with HPS 2, ATEGO, AXOR, MAN-TGA / TGL, Agricultural and construction machines
EAN no.	4251705200592

## DELIVERY INCLUDES

- Adapter E 20 HY
- Extraction tube with connector for direct extraction from the 20 liter Daimler Truck original container

# PERFECTA 20 HY MOBIL

ARTICLE NO. 900.620.000



The PERFECTA 20 HY MOBIL is designed for mobile use in on the road service. The device corresponds technically to the PERFECTA 20 HY and is, despite its portable construction, just as powerful. It is built into a high quality and very strong aluminum box. The interior has receptacles inside for the 20 liter original container, the 10 liter collection container, the hoses of the adapter set and holders for adapters hand pump and combination spanner.

TECHNICAL DATA	PERFECTA 20 HY MOBIL
Article no.	900.620.000
Dimensions	365 x 375 x 740 mm
Weight	14 kg
Max. container size	20 l
Mains voltage	230 V/50 Hz/0,5 to 3,8 bar
Filling hose length	3,9 m
Mobility	In box for use in mobile service
Use case	Hydraulic shifts and clutches
Pump	Electric
Vehicles	ACTROS with HPS 2, ATEGO, AXOR, MAN-TGA / TGL, Agricultural and construction machines
EAN no.	4251705201100



**FOR QUICK  
HYDRAULIC  
OIL CHANGES.**

## DELIVERY INCLUDES

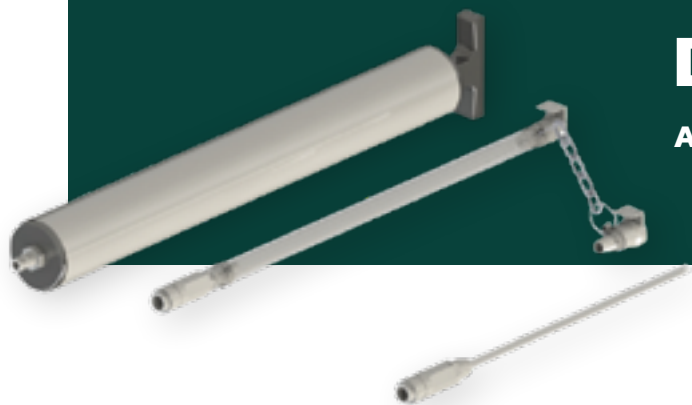
- Pump unit in a mobile aluminum case
- Extraction tube with connector for direct extraction from the 20 liter Daimler Truck original container
- Combination wrenches sizes 7 to 11



**MINERAL OIL FILLING**

# **HY - ADAPTER A, B, C FOR DAIMLER TRUCK**

**ARTICLE NO. 900.530.000**



## **TECHNICAL DATA**

## **HY - ADAPTER A, B, C FOR DAIMLER TRUCK**

Article no.

900.530.000

EAN no.

4251705201025

**PERFECTLY  
ADAPTED FOR  
OPTIMAL USE.**



## **DELIVERY INCLUDES**

- 1 x HY - Adapter A, B, C for Daimler Truck

MINERAL OIL FILLING

# HY - ADAPTER D FOR DAIMLER TRUCK

ARTICLE NO. 900.537.000



## TECHNICAL DATA

## HY - ADAPTER D FOR DAIMLER TRUCK

Article no.

900.537.000

EAN no.

4251705202299



**PRECISE AND  
RELIABLE.**

## DELIVERY INCLUDES

- 1 x HY - Adapter D for Daimler Truck



**MINERAL OIL FILLING**

# **HY - ADAPTER E FOR DAIMLER TRUCK**

**ARTICLE NO. 900.531.000**



## **TECHNICAL DATA**

## **HY - ADAPTER E FOR DAIMLER TRUCK**

Article no.

900.531.000

EAN no.

4251705201971

**FAST  
CONNECTION,  
SAFE  
HANDLING.**



## **DELIVERY INCLUDES**

- 1 x HY - Adapter E for Daimler Truck

# HY - ADAPTER F FOR DAIMLER TRUCK

ARTICLE NO. 900.532.000



TECHNICAL DATA	HY - ADAPTER F FOR DAIMLER TRUCK
Article no.	900.532.000
EAN no.	4251705201957



**FOR MAXIMUM  
EFFICIENCY IN  
EVERYDAY  
WORKSHOP  
OPERATIONS.**

## DELIVERY INCLUDES

- 1 x HY - Adapter F for Daimler Truck



MINERAL OIL FILLING



# HY - ADAPTER G FOR DAIMLER TRUCK

ARTICLE NO. 900.533.000

## TECHNICAL DATA

## HY - ADAPTER G FOR DAIMLER TRUCK

Article no.

900.533.000

EAN no.

4251705201308

**PRECISE AND  
RELIABLE.**



## DELIVERY INCLUDES

- 1 x HY - Adapter G for Daimler Truck

# HY - ADAPTER H FOR DAIMLER TRUCK

ARTICLE NO. 900.534.000



TECHNICAL DATA	HY - ADAPTER H FOR DAIMLER TRUCK
Article no.	900.534.000
EAN no.	4251705201544



**THE  
PERFECT  
COMPLEMENT  
TO YOUR  
SYSTEM.**

## DELIVERY INCLUDES

- 1 x HY - Adapter H for Daimler Truck



MINERAL OIL FILLING

# HY - ADAPTER I FOR DAIMLER TRUCK

ARTICLE NO. 900.535.000



## TECHNICAL DATA

## HY - ADAPTER I FOR DAIMLER TRUCK

Article no.

900.535.000

EAN no.

4251705201063

**PRECISE AND  
RELIABLE.**



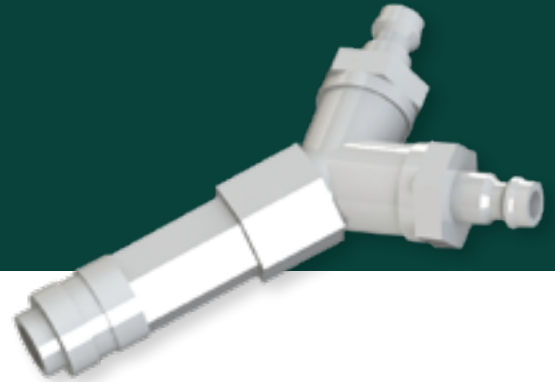
## DELIVERY INCLUDES

- 1 x HY- Adapter I for Daimler Truck

MINERAL OIL FILLING

# HY - ADAPTER K FOR DAIMLER TRUCK

ARTICLE NO. 900.536.000



## TECHNICAL DATA

## HY - ADAPTER K FOR DAIMLER TRUCK

Article no.

900.536.000

EAN no.

4251705201636



**FOR MAXIMUM  
EFFICIENCY IN  
EVERYDAY  
WORKSHOP  
OPERATIONS.**

## DELIVERY INCLUDES

- 1 x HY- Adapter K for Daimler Truck



MINERAL OIL FILLING

# HY - ADAPTER L FOR DAIMLER TRUCK

ARTICLE NO. 900.521.000



## TECHNICAL DATA

## HY - ADAPTER L FOR DAIMLER TRUCK

Article no.

900.521.000

EAN no.

4251705202350

**FOR MAXIMUM  
EFFICIENCY IN  
EVERYDAY  
WORKSHOP  
OPERATIONS.**



## DELIVERY INCLUDES

- 1 x HY- Adapter L for Daimler Truck

MINERAL OIL FILLING

# HY - ADAPTER MAN-TGA FOR VEHICLES WITH KONSBURG SHIFT

ARTICLE NO. 900.806.000



## TECHNICAL DATA

### HY - ADAPTER MAN-TGA FOR VEHICLES WITH KONSBURG SHIFT

Article no.

900.806.000

EAN no.

4251705202138



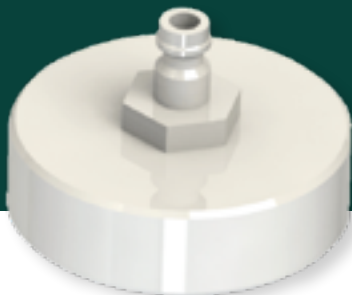
**THE  
PERFECT  
COMPLEMENT  
TO YOUR  
SYSTEM.**

## DELIVERY INCLUDES

- 1 x HY- Adapter MAN-TGA for vehicles with Kongsberg shift



MINERAL OIL FILLING



**HY - ADAPTER**

**MAN TGL G 45**

**ARTICLE NO. 800.446.000**

**TECHNICAL  
DATA**

**HY - ADAPTER MAN  
TGL G 45**

Article no.

800.446.000

EAN no.

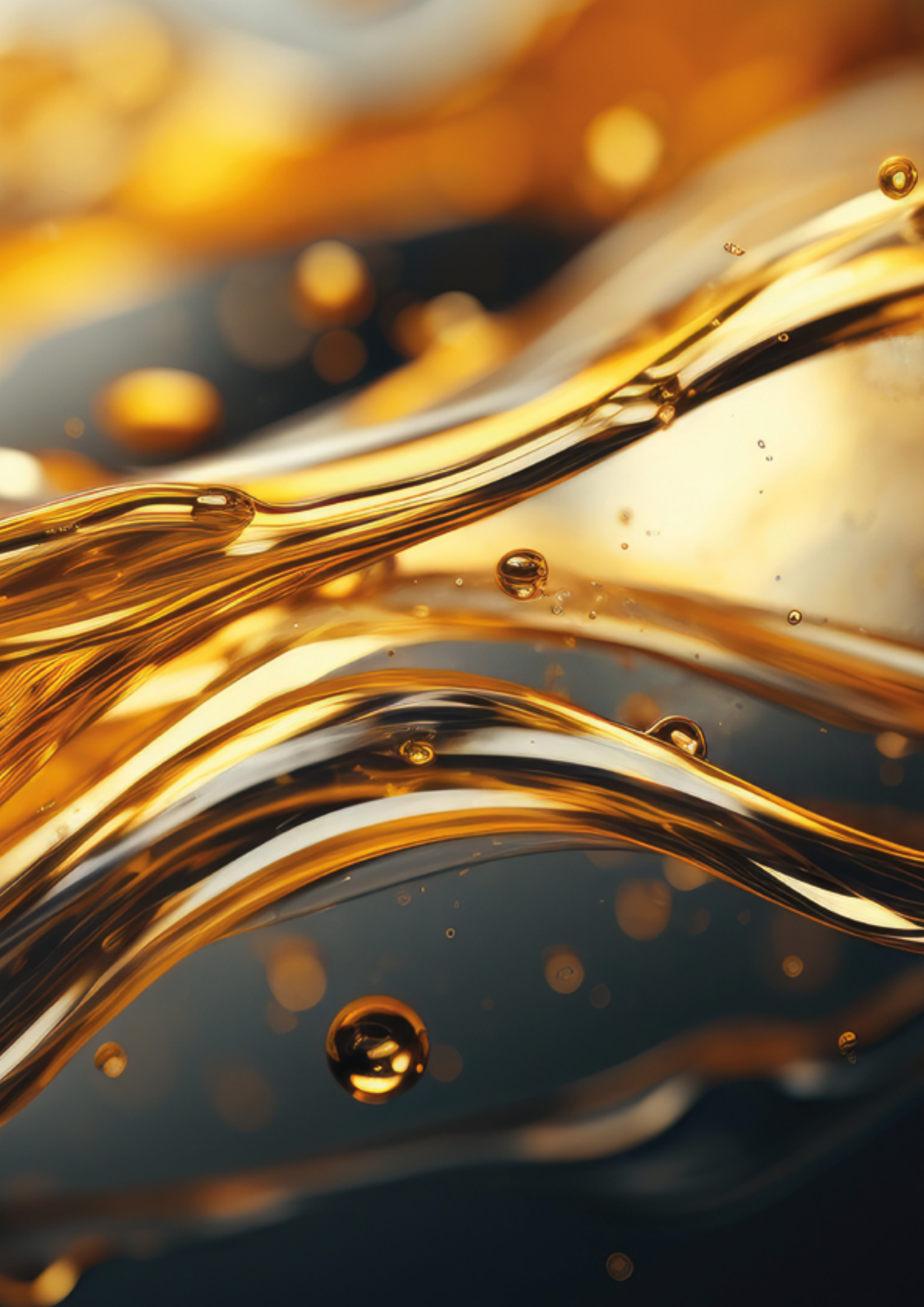
4251705202312

**PRECISE AND  
RELIABLE.**



**DELIVERY INCLUDES**

- 1 x HY - Adapter MAN TGL G 45



# LIFTING GEAR

## CLEVER SOLUTIONS FOR PROFESSIONALS

Change wheels without exertion with the EasyLift: fitting heavy wheels without lifting aids will damage every back sooner or later. The compressed air driven EasyLift is the fastest lifting device on the market and doesn't lose any time in fitting thanks to the patented pneumatic cushioning.

You can't change a wheel without compressed air to measure the air pressure in the tire and setting the right tire pressure! A compressed air connector at the EasyLift with two distributors avoids stumbling blocks with several connected devices, e. g., a tire inflator and an impact wrench. That makes the EasyLift and the digital hand inflator a perfect combination.



**TRANSMISSION  
LIFTER  
PROFI JACK 600**  
PAGE 52



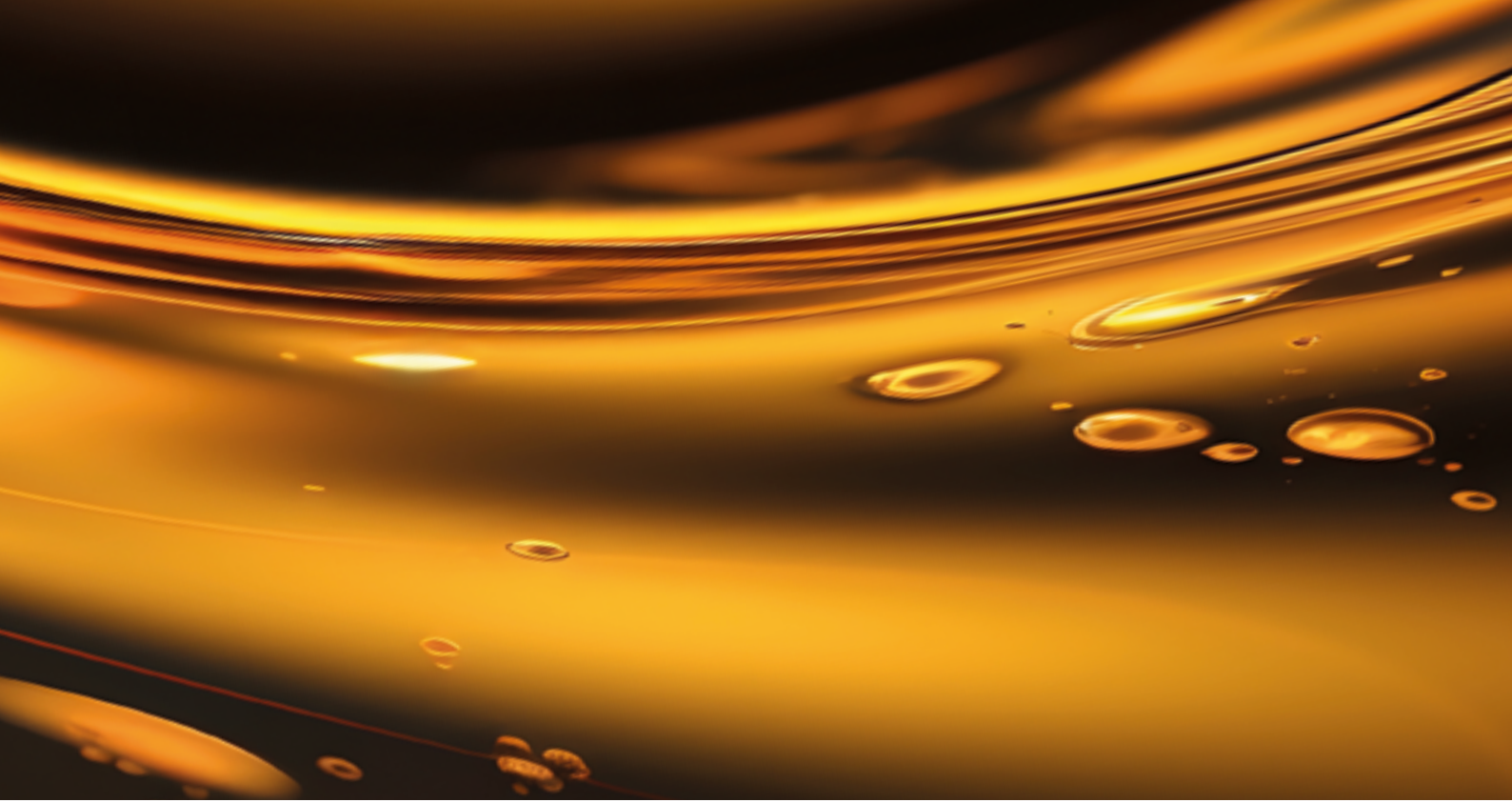
**GEARBOX –  
PLATE  
UNIVERSAL**  
PAGE 53



**EASYLIFT**  
PAGE 54



**ENHANCEMENT SET:  
BOOM & BALANCER**  
PAGE 56



# TRANSMISSION LIFTER PROFI JACK 600

ARTICLE NO. 600.032.000



GL transmission lifters are characterized by their extreme robustness, compact size, and unique rapid lifting feature. This rapid lifting can even be applied under full load. Operation is done using a standard cordless screwdriver. The lifting speed is exceptionally fast. An anti-twist mechanism prevents the office chair effect during the movement of the load carrying device. The particularly low center of gravity ensures stability. High-quality corrosion protection.

**STRONG, STABLE,  
RELIABLE.**



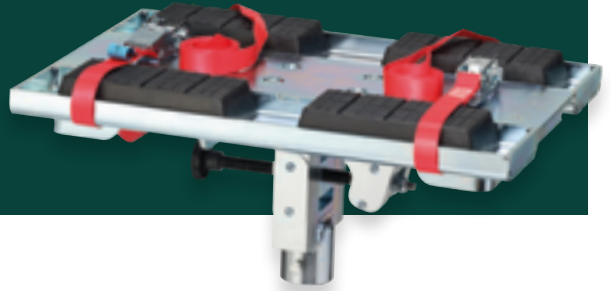
TECHNICAL DATA	TRANSMISSION LIFTER PROFI JACK 600
Article no.	600.032.000
Drive type	Hydraulic
Rapid lift	Standard/cordless screwdriver
Carrying capacity	600 kg
Lifting stroke/lifting height max	1.150 mm / 2.000 mm
Mounting diameter	30 mm
Surface	Powder coating
Corrosion protection	Cathodic dip painting

## DELIVERY INCLUDES

- Profi Jack 600 gearbox jack with standard mount

# GEARBOX – PLATE UNIVERSAL

ARTICLE NO. 600.032.021



Gearbox mount adjustable on one side.

Adjustment angle  $\pm 12^\circ$ , weight 23 kg, large rubber support surfaces, tensioning straps for securing the load, tilt easily adjustable on all sides via thread, particularly flat design, galvanized as standard, carrying capacity 1 t, pin diameter  $\varnothing$  35 mm, dimensions 546 x 381 x 138 mm.

TECHNICAL DATA	GEARBOX – PLATE UNIVERSAL
Article no.	600.032.021
Dimensions	546 x 381 x 138 mm
Weight	23 kg
Carrying capacity	1.000 kg
Pin diameter	35 mm
EAN no.	4251705203098



**EFFICIENCY  
WITHOUT  
COMPROMISE.**

## DELIVERY INCLUDES

- 1 x Gearbox – plate universal





# **EASYLIFT**

**ARTICLE NO. 200.100.000**

The EasyLift makes wheel-changing much easier. Wheels of up to 60 kg can be changed quickly and with minimum effort.

## **FASTEST DEVICE ON THE MARKET:**

Its high lifting and lowering speed makes the EasyLift the fastest device on the market. The wheel remains movable on a mounting fixture with rollers on ball bearings. The lifting device works with compressed air, an innovative patented mechanism for fine adjustment at working height enables precise fitting of the wheel.

## **PRACTICAL DETAILS:**

The EasyLift is always mobile due to the trolley. A well-designed storage system for bolts and hooks for the hand tire inflator etc. and a hanger for the torque wrench ensure a tidy work area.

## **SAFETY AT WORK:**

According to the occupational accident insurance, the "change of wheels" is work with an increased risk level. High workloads and physical oversteering are probable results for the fitter. For this reason, the EasyLift is an effective design measure in order to comply with the occupational accident insurance specifications or the ordinances of 90/269 EEC. The EasyLift has a variable compressed air connection on the side of the pillar or on the top of the pillar and two distributors for connecting e. g. a tire inflator or impact wrench.

**EFFORTLESS  
WORK WHEN  
CHANGING  
A WHEEL.**





**A SOPHISTICATED  
AND PROVEN  
PRODUCT THAT MAKES  
CHANGING WHEELS  
VERY CONVENIENT.**

#### OTHER FEATURES:

- No electricity or battery required
- Absolutely maintenance free
- One-man operation
- Boom and balancer optionally available
- Variable compressed air connection, laterally or on the top
- Two distributors for connecting e. g. a tire inflator or an impact wrench

TECHNICAL DATA	EASYLIFT
Article no.	200.100.000
Depth/width/height without crossbeam and balancer	570 x 780 x 1.470 mm
Height with crossbeam and balancer	2.200 mm
Weight	48,8 kg
Working height	approx. 1.400 mm
Carrying capacity	60 kg
Operating pressure	max. 8 bar
Tire size	min. 135 / 80 R 13 max. 325 / 35 ZR 26
EAN no.	4251705200028



# ENHANCEMENT SET: BOOM & BALANCER

ARTICLE NO. 200.110.000



A boom with a balancer enables non-fatiguing work with the impact wrench on the wheel.

The bracket ensures that the device does not get in the way when it is not being used.

## TECHNICAL DATA

Article no.

EAN no.

## ENHANCEMENT SET: BOOM & BALANCER

200.110.000

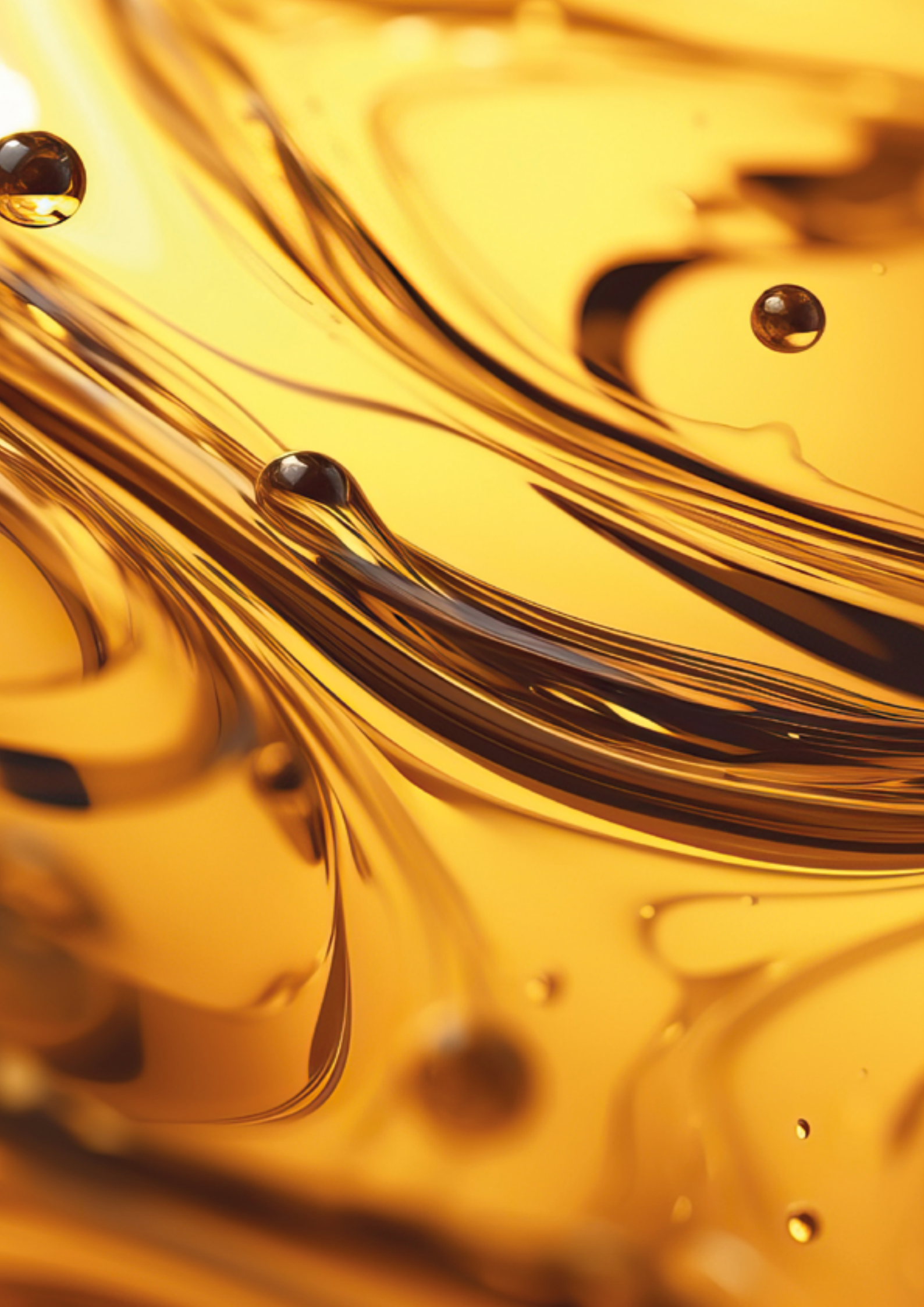
4251705200547

**OPTIMIZED  
FOR  
EASYLIFT  
SYSTEMS.**



## DELIVERY INCLUDES

- Enhancement Set: Boom & Balancer



# TOOLS

## TOOLS FOR MANUFACTURING SPECIFIC APPLICATIONS

Production changes in car manufacturing require corresponding tools for car workshops. GL TECHNICS always has current know-how of the sector and is able, to develop and manufacture individual solutions.



**LASER  
WELDING  
MILLER**  
PAGE 59

# LASER WELDING MILLER

ARTICLE NO. 631.900.000



The laser welding miller opens laser welded seams in bodywork quickly and without risk of injury to the user. The tool works with compressed air drive. The special feature of the patented system is the precise guidance of the ball cutter. The exchangeable base plate allows the milling machine to be guided along edges or into hard to access corners with little effort. Even set back laser welded seams can be reached easily with it. A fine thread allows the depth to which the milling tool removes material to be set to within a tenth of a millimeter. This precise milling avoids material weakening and damage to paint, disadvantages of using angle grinders.

TECHNICAL DATA	LASER WELDING MILLER
Article no.	631.900.000
Weight	2,6 kg
Drive	Compressed air-milling spindle
Air pressure	6 bar
Unloaded speed	35.000 U/min
Turn direction	Clockwise
Noise level	72 db (A)
Air consumption	450 nl/min
Power	280 W
EAN no.	4251705200318

**OPEN LASER-  
WELDED  
SEAMS  
EASILY AND  
CLEANLY.**



## DELIVERY INCLUDES

- Compressed air driven spindle – clockwise operation with compressed air hose (1.5 m)
- 2 hard metal ball cutters (Shaft 6 mm)
- 1 oval shaped base plate
- exchangeable makrolon shavings protection plate
- 2 socket wrenches for changing the ball cutter
- In plastic case





# GEARBOX FLUSHING

## **CLEANING WITHOUT ADDITIVES**

Sealings and gear components are attacked chemically by additives. If they are used in gear flushing, they can loosen fine particles and cause serious damage in highly complex gear systems. Vehicle and gear manufacturers are thus very skeptical about the use of additives: their guarantees are voided if additives are used for cleaning. The damages arising to the gears must be borne by the servicing operation or by the customer. The flushing devices clean the gears gently, without using additives.

## **CLEANING WITH HEAT AND FLOW SPEED**

The old oil is removed gently and almost without residue just by the use of heat and a high flow speed from the gear pipes and deposits are rinsed from the high-performance filter.

## **OIL CHANGE + GEARBOX FLUSHING = OIL CHANGE PLUS**

With a conventional oil change up to 60% of the old gear oil remains in the vehicle. Gear flushing ensures that the old oil is removed from the transformers and pipes almost without residue.



## MORE THAN AN OIL CHANGE

After a certain period of running, changing the gear oil is to be recommended. Just draining and refilling is not, however enough as that only removes some of the old gear oil: up to 60% remain in the transformer and in various lines. With the GL TECHNICS gear flushing devices the half job becomes a whole step: the oil change is complemented by flushing the gears.



**AGS 20 FLUSH-  
ING DEVICE  
FOR AUTOMATIC  
TRANSMISSIONS**  
PAGE 62



**AGS  
UNIVERSAL  
ADAPTER CASE**  
PAGE 63



**AGS  
ADAPTER CASE  
BMW**  
PAGE 64



**AGS  
ADAPTER CASE  
MERCEDES**  
PAGE 65



**AGS ADAPTER  
CASE VOLKSWAGEN  
GROUP**  
PAGE 66

# AGS 20 FLUSHING DEVICE FOR AUTOMATIC TRANSMISSIONS

ARTICLE NO. 400.400.000



## HIGH-END VERSION OF THE FLUSHING DEVICES FOR AUTOMATIC TRANSMISSIONS.



### OTHER FEATURES:

- Powerful pump
- Compressed-air driven
- Well-designed storage system
- No vulnerable electronics
- No complex updates necessary
- Made of steel sheet with noplasic parts



The High-End-Version of flushing devices, the AGS 20, can change automatic gear oil without problems and clean the gears in the same work process. It has two steel containers for old and new oil each with a volume of 20 liters. Two high-performance filters (20 µm) clean the old and new oil during the flushing process. The old oil can be emptied easily and disposed of in the collecting system.

The residual oil can be removed from the oil sump without any additional devices. Furthermore, all additives and cleaners are prohibited by vehicle and transmission manufacturers. Four high quality wheels with stopping function make the stable appliance the mobile support in the workshop.

TECHNICAL DATA	AGS 20 FLUSHING DEVICE FOR AUTOMATIC TRANSMISSIONS
Article no.	400.400.000
Dimensions	approx. 700 x 600 x 1.200 mm
Transfer capacity of the membrane pump	60 l/min
Length of connection hoses	2.500 mm
Compressed air connection	8 bar
Old oil container volume	20 l
New oil container volume	20 l
Air sound emission noise level	< 70 db (A)
Temperature resistance	120° C
Weight	94 kg
EAN no.	4251705200080

# AGS UNIVERSAL ADAPTER CASE

**ARTICLE NO. 400.490.000**



This universal adapter set compatible with flushing devices of the AGS series is indispensable for independent workshops. The adapters are made in Germany with high quality materials.

This adapter set makes the AGS devices compatible with 90% of the vehicles of German manufacturers and many those of European manufacturers.

TECHNICAL DATA	AGS UNIVERSAL ADAPTER CASE
Article no.	400.490.000
EAN no.	4251705200356



**HIGH-QUALITY  
ADAPTER "MADE  
IN GERMANY".**

## DELIVERY INCLUDES

- Adapter Flushing Device 433
- Adapter Flushing Device 435
- Adapter Flushing Device 436
- Adapter Flushing Device 437
- Adapter Flushing Device 438
- Adapter Flushing Device 440
- Adapter Flushing Device 441
- Adapter Flushing Device 442
- Adapter Flushing Device 444
- Adapter Flushing Device 452





# AGS ADAPTER

## CASE BMW

ARTICLE NO. 400.491.000

IMAGE  
SIMILAR

This BMW adapter set compatible with flushing devices of the AGS series is indispensable for independent workshops. The adapters are made in Germany with high quality materials.

### TECHNICAL DATA

### AGS ADAPTER CASE BMW

Article no.

400.491.000

EAN no.

4251705201841

**COMPATIBLE  
WITH BMW.**



### DELIVERY INCLUDES

- Adapter Flushing Device 435
- Adapter Flushing Device 437
- Adapter Flushing Device 441
- Adapter Flushing Device 442
- Adapter Flushing Device 443
- Adapter Flushing Device 457

# AGS ADAPTER CASE MERCEDES

**ARTICLE NO. 400.492.000****IMAGE  
SIMILAR**

This Daimler adapter set compatible with flushing devices of the AGS series is indispensable for independent workshops. The adapters are made in Germany with high quality materials.

TECHNICAL DATA	AGS ADAPTER CASE MERCEDES
Article no.	400.492.000
EAN no.	4251705202237

**COMPATIBLE  
WITH DAIMLER.****DELIVERY INCLUDES**

- Adapter Flushing Device 433
- Adapter Flushing Device 452
- Adapter Flushing Device 453





# AGS ADAPTER CASE VOLKSWAGEN GROUP

ARTICLE NO. 400.493.000

## IMAGE SIMILAR

This Volkswagen Group adapter set compatible with flushing devices of the AGS series is indispensable for independent workshops. The adapters are made in Germany with high quality materials.

**COMPATIBLE WITH  
ALL BRANDS OF  
VOLKSWAGEN  
GROUP.**



### TECHNICAL DATA

Article no.

EAN no.

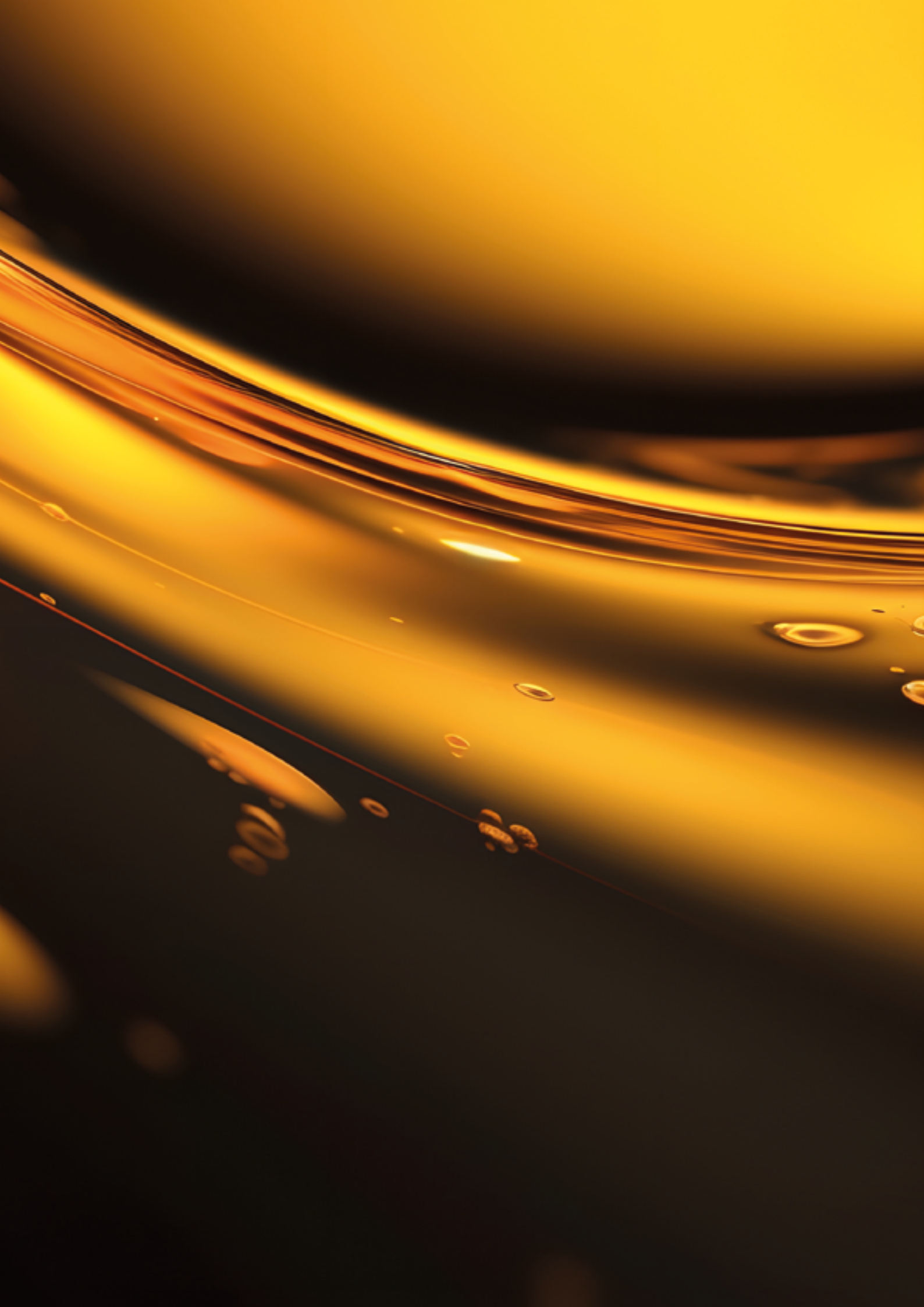
### AGS ADAPTER CASE VOLKSWAGEN GROUP

400.493.000

4251705201995

### DELIVERY INCLUDES

- Adapter Flushing Device 436
- Adapter Flushing Device 438
- Adapter Flushing Device 439
- Adapter Flushing Device 440
- Adapter Flushing Device 444
- Adapter Flushing Device 451
- Adapter Flushing Device 454
- Adapter Flushing Device 458
- Adapter Flushing Device 460



# SUSPENSION

## SHOCK ABSORBER SERVICE

The SDS 5, SDE 96, and ABS 100 form a powerful trio for professional shock absorber service. Whether flushing, evacuating, or filling – each unit is designed for maximum efficiency and precise results. They offer ease of use, maximum reliability, and a robust construction that easily handles the rigors of everyday workshop use. Thanks to their optimal coordination, shock absorbers can be serviced quickly, cleanly, and safely. With these units, workshops save time, increase service quality, and ensure a completely professional result every time.



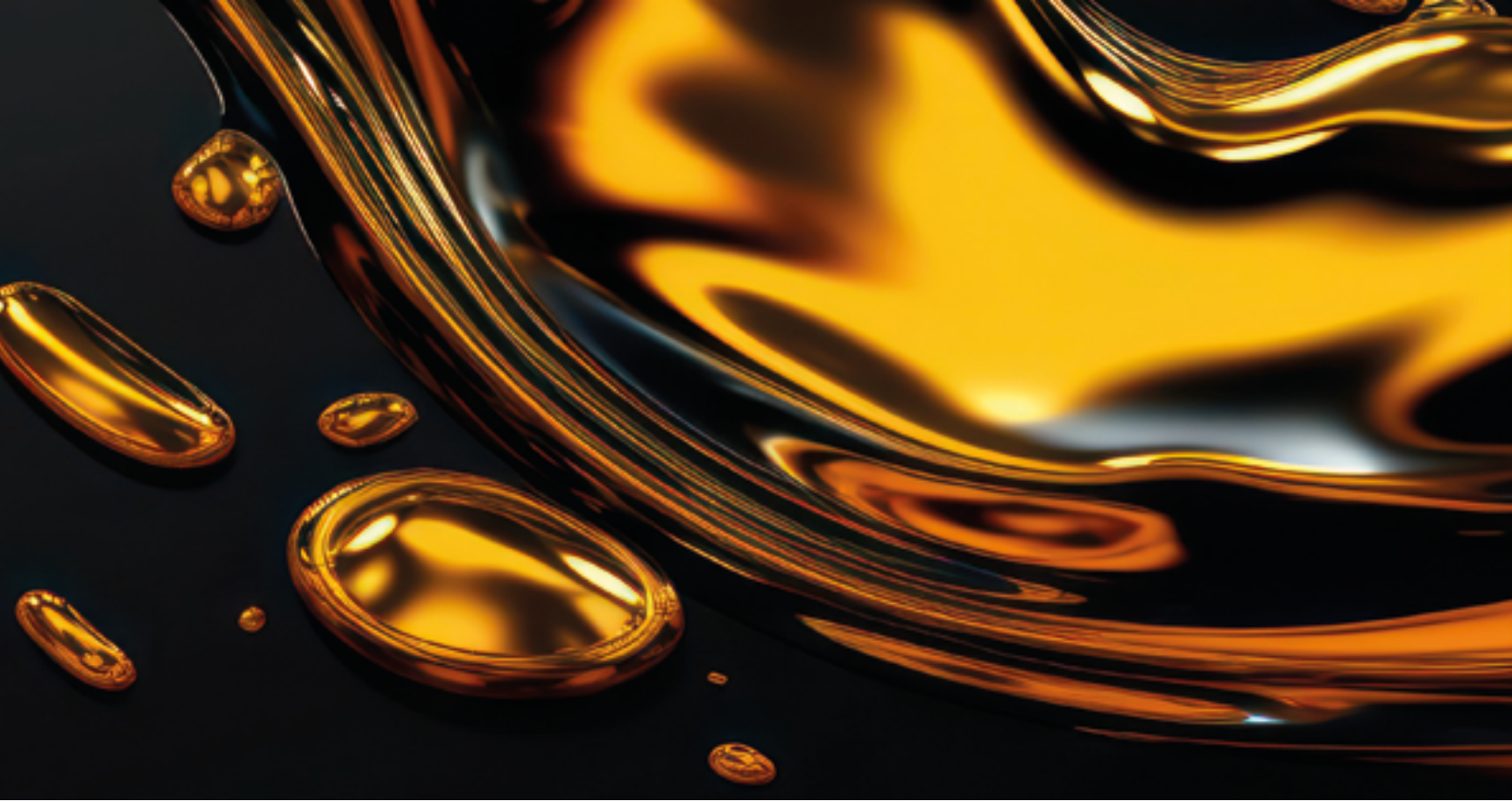
**FILLING AND  
BLEEDING DEVICE  
FOR ESUSPENSION  
SDS 5**  
PAGE 72



**SUSPENSION  
EVACUATION  
DEVICE SDE 96**  
PAGE 73



**EVACUATION AND  
FILLING DEVICE  
FOR SHOCK AB-  
SORBERS EBS 100**  
PAGE 74



DEVICE	FUNCTION	WORKING PRESSURE/ PERFORMANCE	VOLUME
<b>FILLING AND BLEEDING DEVICE FOR ESUSPENSION SDS 5</b>	Shock absorber flushing for Active Body Control systems	Max. 40 bar	Fresh oil tank: 8 l Used oil tank: 10 l
<b>SUSPENSION EVACUATION DEVICE SDE 96</b>	Vacuum and filling device for shock absorbers (in combination with SDS 5)	Max. vacuum: 0,98 bar	Oil separator: approx. 0,5 l Compensation blades: up to 0,75 l
<b>EVACUATION AND FILLING DEVICE FOR SHOCK ABSORBERS EBS 100</b>	Shock absorber evacuation and filling for various vehicle types	Max. working pressure: 40 bar	Fresh oil tank: 8 l Used oil tank: 10 l

# FILLING AND BLEEDING DEVICE FOR ESUSPENSION SDS 5

ARTICLE NO. 400.500.000



## OTHER FEATURES:

- 110 V version available
- Solid metal housing
- Safe operation of high pressures
- Including adapter pliers
- Including 10 L collection container for used fluids
- GS tested

## SERVICE FOR SHOCK ABSORBERS IN ACTIVE CHASSIS.



The Active Body Control chassis is the introduction of a new, active and innovative suspension system to the market. The suspension system operates at roughly 30 bar and therefore requires a device that is specially designed to withstand these pressures for emptying, flushing and filling. Work on the suspension system must be carried out not only in the event of damage to the suspension system itself, but also during repair and replacement work on other parts such as the wishbone. In order to guarantee correct filling and to avoid damage to the system, proper maintenance can only be carried out with this device.

TECHNICAL DATA	FILLING AND BLEEDING DEVICE FOR ESUSPENSION SDS 5
Article no.	400.500.000
Dimensions	650 x 660 x 960 mm
Weight	70 kg
Mains voltage	230 V/50Hz
Max. working pressure	40 bar
New oil container volume	8 l
Old oil container volume	10 l
Power cord length	3 m
EAN no.	4251705200141

## DELIVERY INCLUDES

- Filling and Bleeding Device for eSuspension SDS 5

# SUSPENSION EVACUATION DEVICE SDE 96

ARTICLE NO. 400.501.000

The CVSA2/Kinetic® suspension combines sportiness and comfort. In this suspension, each shock absorber is connected to each other via two hydraulic circuits and various valves. To be able to fill these hydraulic circuits with fresh hydraulic oil in the event of damage, a device is required that first removes the old oil from the circuits, then evacuates the circuits to almost -1 bar and finally fills them with fresh hydraulic oil at high pressure. All these requirements are fulfilled by the Suspension Evacuation Device SDE 96 in combination with the Filling and Bleeding device for eSuspension SDS 5 (ATTENTION: Both units are needed to perform a flushing or refilling of the CVSA2/Kinetic® suspension).



**EMPTYING,  
VACUUMING,  
FILLING: FOR  
HYDRAULIC  
SYSTEMS.**

TECHNICAL DATA	SUSPENSION EVACUATION DEVICE SDE 96
Article no.	400.501.000
Dimensions	520 x 650 x 580 mm
Weight	approx. 40 kg
Maximum negative pressure of the vacuum pump	0,98 bar
Volume of oil separator	approx. 0,5 l
Volume of compensation container	up to 0,75 l
Filling speed	0,6 l/min
Noise level	≤ 70 db (A)



# EVACUATION AND FILLING DEVICE FOR SHOCK ABSORBERS EBS 100

ARTICLE NO. 400.505.100



**THE  
PROFESSIONAL  
FOR SHOCK  
ABSORBER  
SERVICE.**



The EBS 100 is the only device of its kind in the world. It can be used to perform service on the most advanced suspension systems. The ability to flexibly adjust the pressure is particularly suitable for flushing the kinetic suspensions of all current and future vehicles.

Due to the simple operation and the robust construction made of steel, it is well equipped to withstand the tough daily workshop routine. High-quality handles, smooth-running heavy-duty rollers with large radii and an impact-resistant powder coating make the EBS100 a device for many years of use.

## **FUNCTIONS:**

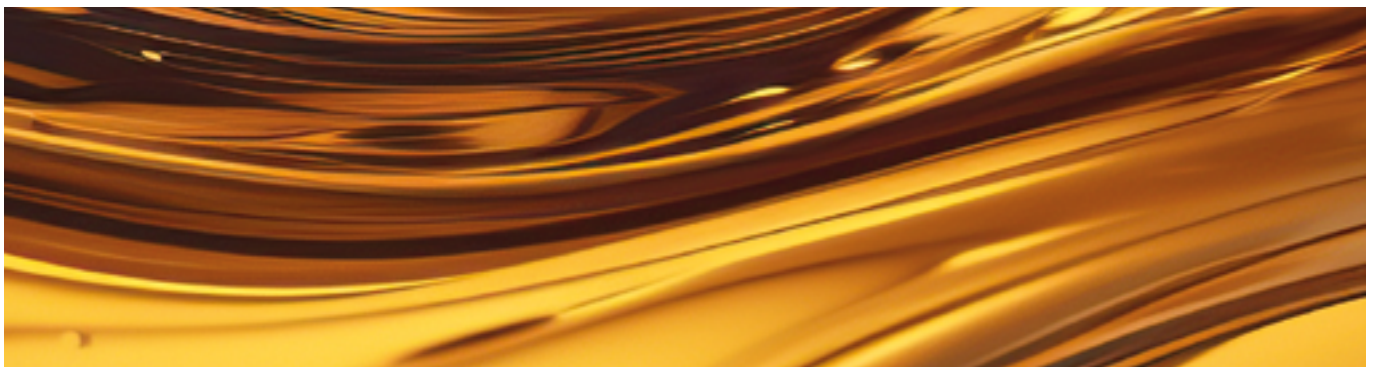
- Independent venting of the internal device pipelines
- Inspection through integrated sight glass
- Bubble free filling of hydraulic systems with adjustable pressure between 4 and 40 bar
- Bringing hydraulic systems to ambient pressure in a controlled manner through drain hose with ball valve
- Connection to waste oil tank via oil drain hose
- Blowing out hydraulic systems with compressed air
- Disposal of used oil in canister
- Generation of vacuum up to an absolute pressure of 0.002 bar

All functions can be realized by turning two levers. Once connected to the vehicle it is not necessary to reconnect hoses during this process.

TECHNICAL DATA	EVACUATION AND FILLING DEVICE FOR SHOCK ABSORBERS EBS 100
Article no.	400.505.100
Dimensions	607 x 690 x 1.002 mm
Mains voltage	230 V/50 Hz
Max. working pressure	40 bar
Power cord length	3 m
Old oil container volume	10 l
New oil container volume	8 l

### DELIVERY INCLUDES

- Old oil container 10 liter



# GLOSSARY

## **ABOUT US 04**

## **PRODUCTS:**

## **APPLICATIONS FOR ADBLUE® 08**

210L PROFI LINE PLUS FILLING DEVICE FOR ADBLUE®	
WITH ROLLER CONVEYO	10
EXTRACTION PUMP FOR ADBLUE® 230 V	11
EXTRACTION FITTING 210L IN 60L APPLIANCE TANK	12
EXTRACTION FITTING 1,000L IN 60/210L APPLIANCE TANK	13

## **BRAKE MAINTENANCE 14**

PERFECTA 3	16
PERFECTA 4 DESIGN	17
PERFECTA 4 DESIGN PLUS	18
PERFECTA 20 DESIGN PLUS	19
PERFECTA 60 DESIGN PLUS	20
1-LITER COLLECTION BOTTLE ROUND NECK	
WITH HANDLE AND TUBE	21
2-LITER COLLECTION BOTTLE ROUND NECK	
WITH HANDLE AND TUBE	22

UNIVERSAL ADAPTER CASE PROFI SMALL	23
UNIVERSAL ADAPTER CASE PROFI LARGE	24
<b>FUEL APPLICATIONS</b>	<b>26</b>
TANK PRIMUS 80	28
EXTRACTION PROBE SET	29
AUTOMATIC NOZZLE (TANK PRIMUS 80)	30
AUTOMATIC NOZZLE (TANK PRIMUS 100/100S)	31
DEG DIESEL VENTING DEVICE	32
"LONG" ELECTRICAL CONNECTION CABLE	33
<b>MINERAL OIL FILLING</b>	<b>34</b>
PERFECTA 20 HY	36
PERFECTA 20 HY MOBIL	37
HY - ADAPTER	38-48
<b>LIFTING GEAR</b>	<b>50</b>
TRANSMISSION LIFTER PROFI JACK 600	52
GEARBOX – PLATE UNIVERSAL	53
EASYLIFT	54-55
ENHANCEMENT SET: BOOM & BALANCER	56
<b>TOOLS</b>	<b>58</b>
LASER WELDING MILLER	59
<b>GEARBOX FLUSHING</b>	<b>60</b>
AGS 20 FLUSHING DEVICE FOR AUTOMATIC TRANSMISSIONS	62
AGS UNIVERSAL ADAPTER CASE	63
AGS ADAPTER CASE BMW	64
AGS ADAPTER CASE MERCEDES	65
AGS ADAPTER CASE VOLKSWAGEN GROUP	66
<b>SUSPENSION</b>	<b>68</b>
FILLING AND BLEEDING DEVICE FOR ESUSPENSION SDS 5	70
SUSPENSION EVACUATION DEVICE SDE 96	71
EVACUATION AND FILLING DEVICE FOR	
SHOCK ABSORBERS EBS 100	72-73





**GL GMBH METALL-  
UND WERKSTATTECHNIK**

Nürtinger Straße 23 – 25 | 72636 Frickenhausen  
Tel.: +49 7022 94322-44 | [info@gl-gmbh.de](mailto:info@gl-gmbh.de)

**[gl-gmbh.de](http://gl-gmbh.de)**